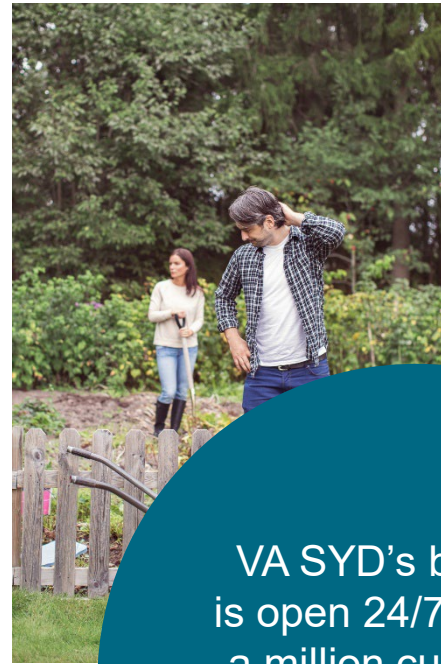


VASYD



55°36'21.13"N, 13°0'2.63"E



VA SYD's business is open 24/7, has half a million customers, and a turnover of one billion SEK per year



Area of operation

We are responsible for water and sanitation services and the owner of the public water and sewer facilities in our five member municipalities. We are also responsible for the collection of household waste.

Malmö, Sweden



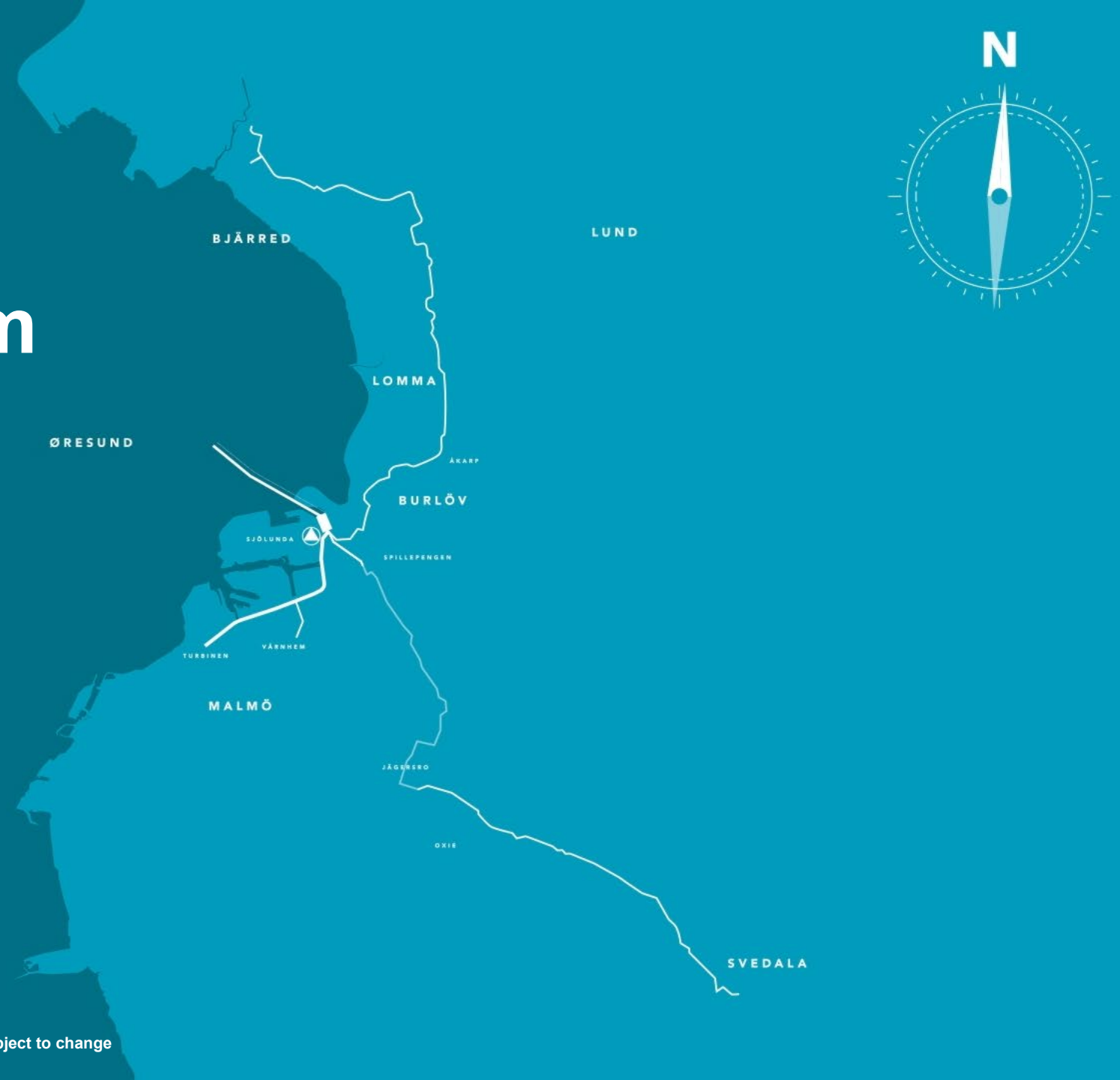


MAXIMA

55°36'21.13"N, 13°02'2.63"E

A regional wastewater system

- Treatment plant
- Outlet pipes
- Wastewater tunnels
- Pumping station
- Transfer pipes from neighbouring municipalities



Timeline





The Wastewater Tunnel

Located in Malmö

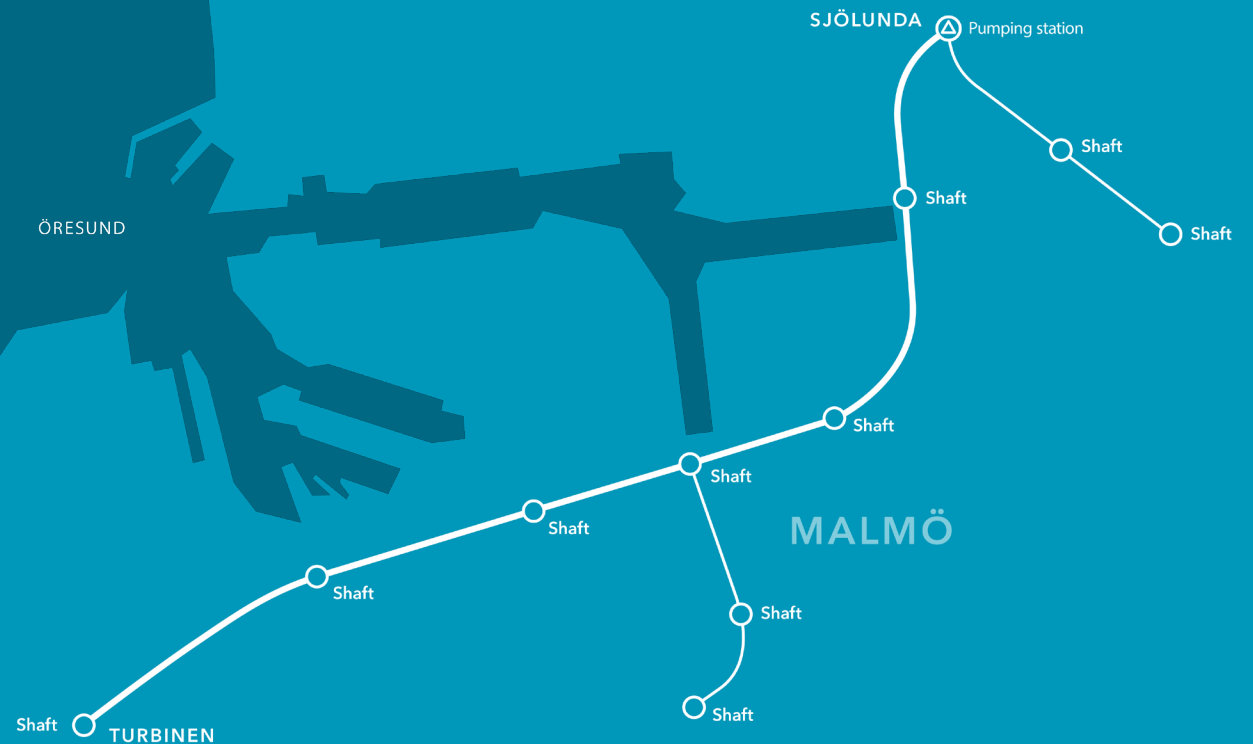
- ◊ Sweden's third largest city
- ◊ ~ 400 000 habitants
- ◊ Greater Copenhagen



55°36'21.13"N, 13°0'2.63"E

The tunnels

- ◊ The main wastewater tunnel from Turbinen to Sjölundas WWTP
- ◊ The tunnel system also includes two connecting microtunnels

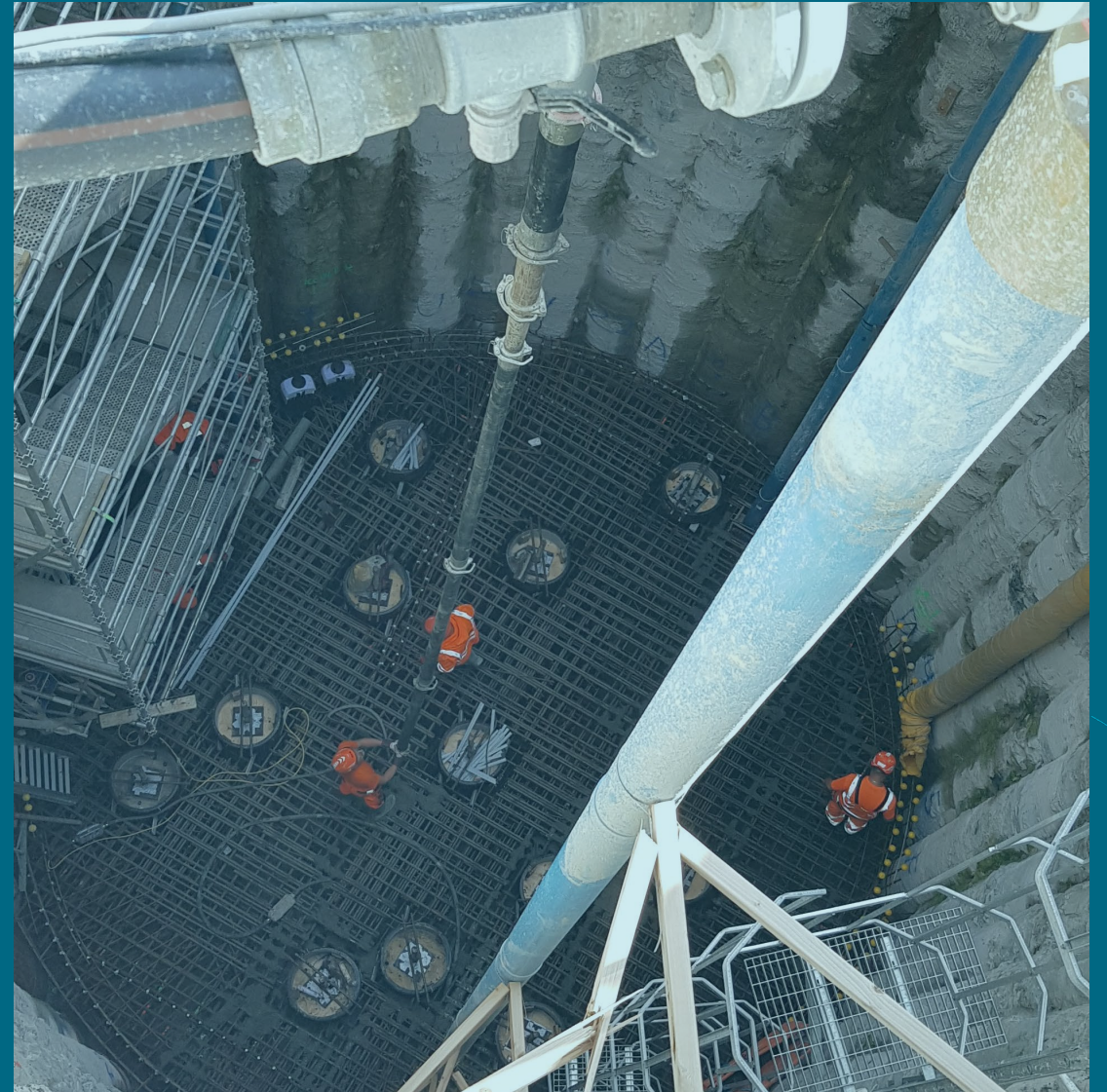


The scope of the tunnel system

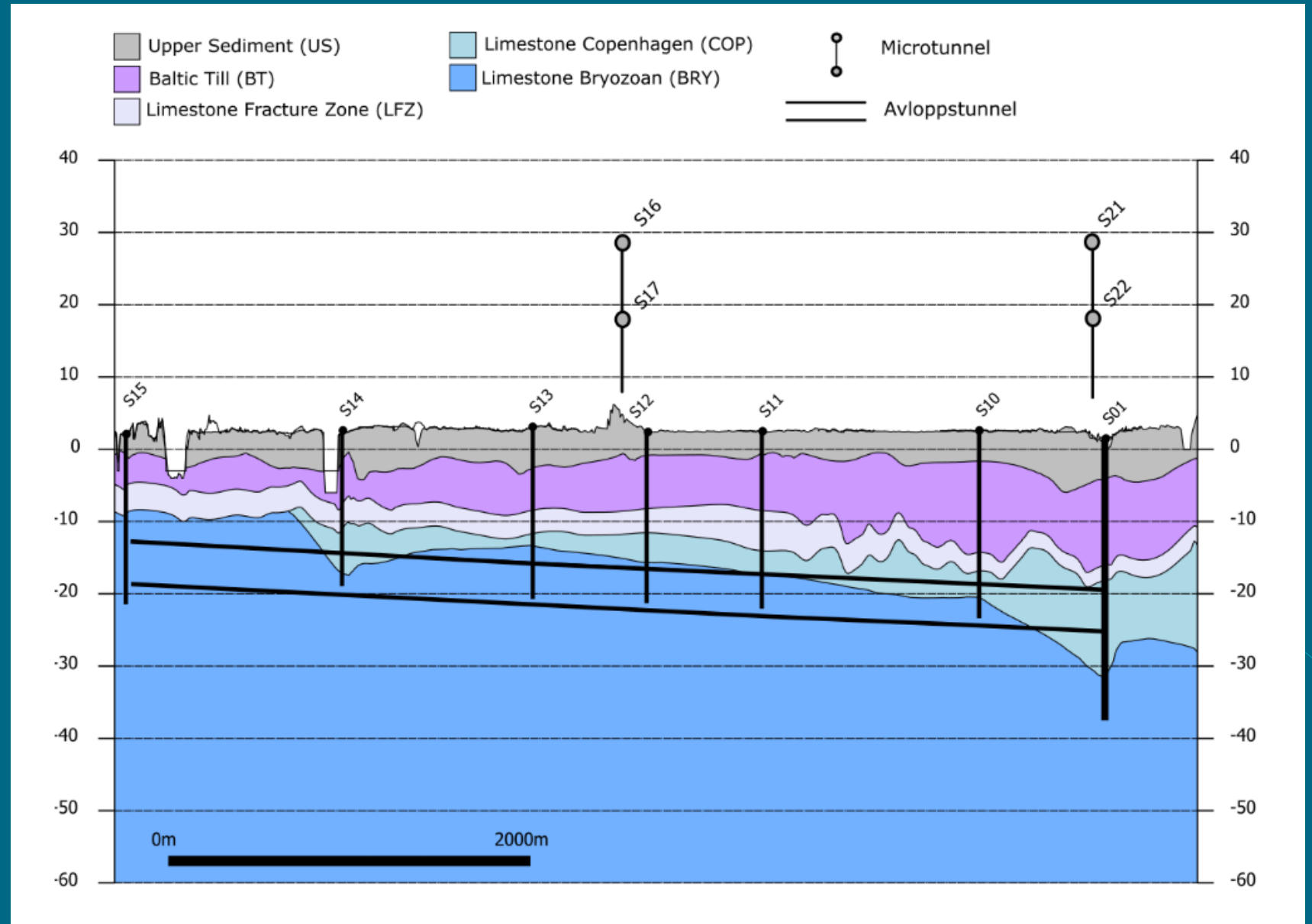
- ◊ Lined tunnel
- ◊ The tunnels will run approximately 17–30 meters below ground
- ◊ The main tunnel:
 - ◊ 5.5 kilometres long
 - ◊ An internal diameter of approximately 5 meters
- ◊ The microtunnels:
 - ◊ Total length of 2.4 km
 - ◊ Both tunnels have an internal diameter of approximately 2 meters

The shafts

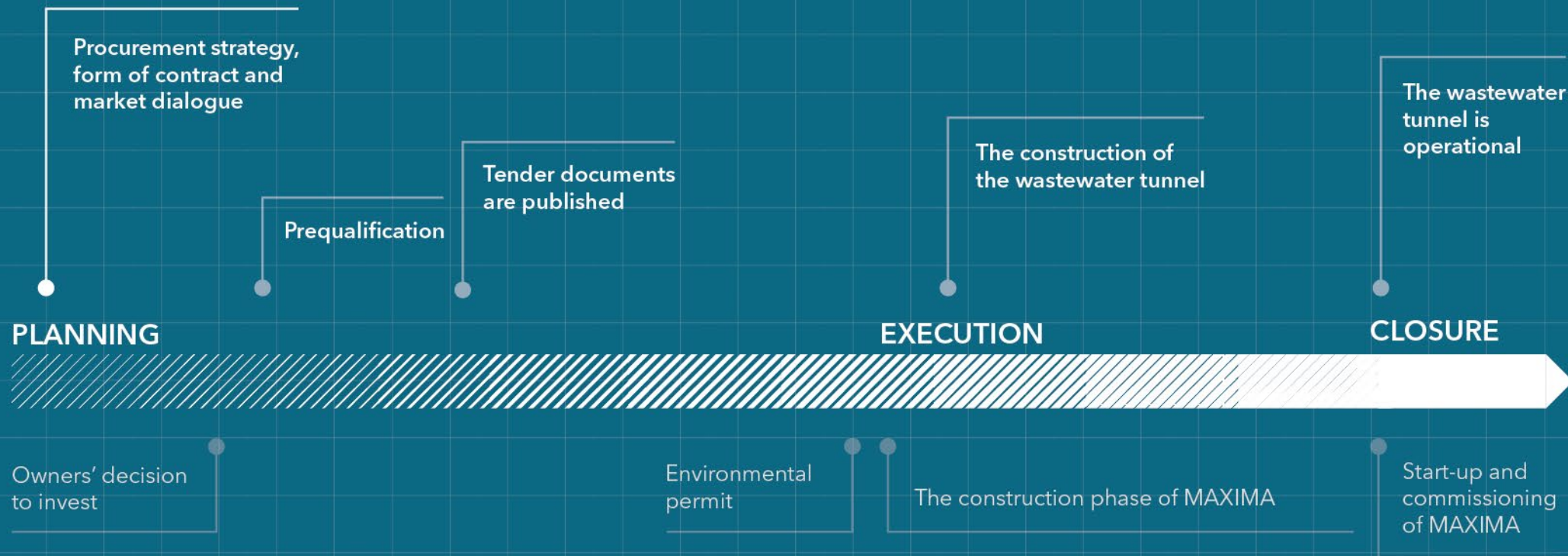
- ◊ 11 shafts along the tunnel system
 - ◊ 10 shafts have an internal diameter of between 5–15 meters
 - ◊ The starting shaft for the main tunnel (future Sjölanda pumping station) is 45 meters in internal diameter
- ◊ The depth varies between 17–30 meters



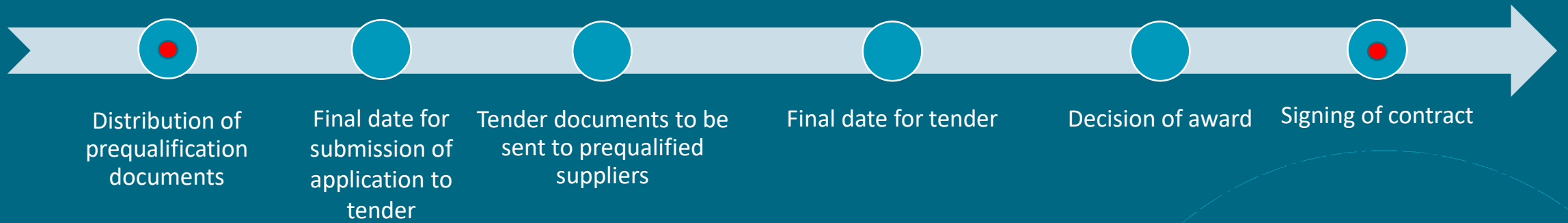
Geological profile




Project process – The Wastewater Tunnel



Procurement process





Discussion & Questions

- ◊ The scope of work, how does it suit your organisation?
- ◊ Thoughts about durations?
 - ◊ Prequalification
 - ◊ Tender time
 - ◊ Design and establishment after signing the contract
- ◊ Contract form what is your opinion on that?
- ◊ Prequalification criteria?
- ◊ What Criteria in the tender phase (soft values) do you think is valuable?
- ◊ Compensation and payment models?
- ◊ Documents and information needed in the calculation process?
- ◊ Collaboration?
- ◊ How do we make a contract of this size attractive?
- ◊ TBM contract – something you would like to add?
 - ◊ For example, regarding: Logistics, delivery times and other aspects



Åsa Andersson, Procurement Manager

Asa.m.andersson@vasyd.se

Web: maxima.vasyd.se

Newsletter: maxima.vasyd.se/nyhetsbrev

[#maxima](https://twitter.com/maxima)

Building on history

For a better future

maxima.vasyd.se